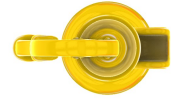


FunForms™ Aqua Sprayers

THEMED CREATIONS WITH COOL SPRAY EFFECTS



WATER ODYSSEY™
BY FOUNTAIN PEOPLE
A PLAYCORE Company



Ranch Hand Pump

Note: Final product may vary from rendering.

Activity

This static spray feature resembles the classic form of a hand pump that creates a spill of water. The pump can be paired with runnels to create a cascading water effect.

Model: F2152



11 GPM at 3 PSI (42 LPM at 0.21 BAR)

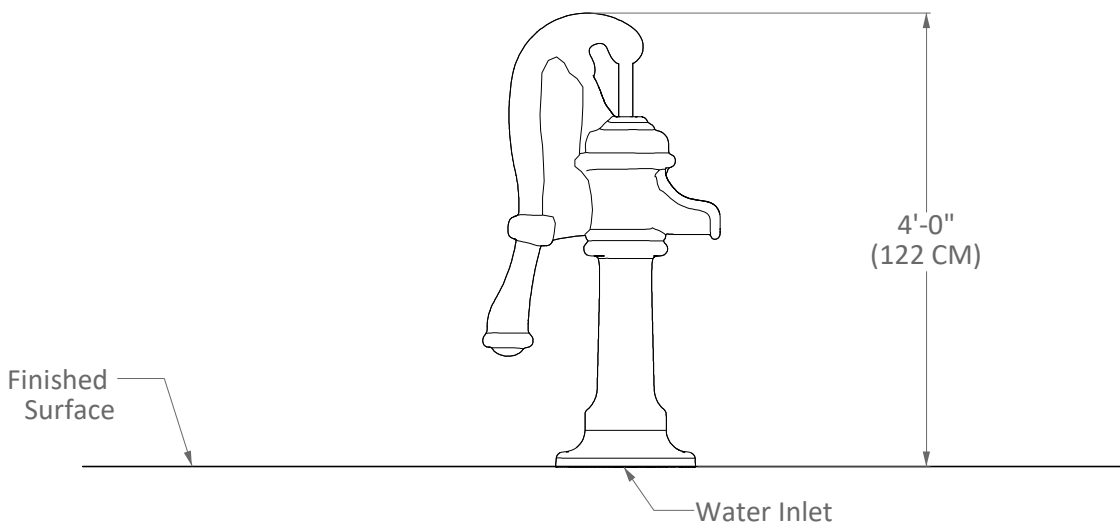
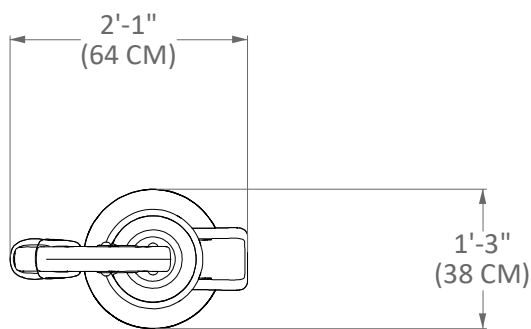


2'-1" / 1'-3" / 4'-0"
(64 / 38 / 122 CM)

Features & Benefits

- Can enhance your facility's theme.
- Coated with Aqua Armor - the most durable Chlorine UV and vandal resistant coating in the industry.
- Interchangeable with other Fun Forms™ spray features.
- ASTM compliant.

CREATING COMPELLING AQUATIC PLAY EXPERIENCES
512.392.1155 | www.waterodyssey.com



Specifications

Model Number: F2152

Age Group: Designated for ages 5 - 12

Construction: Hard foam core with Aqua Armor™ (structural elastomeric polymer outer shell)

Anchors: 1/2"-13 stainless steel epoxy anchors (Supplied)

Fasteners: 1/2"-13 Tamper-resistant stainless steel (Supplied)

Spacers: As required, must be non-ferrous (By Installer)

Supply Line: 1-1/2" with Sch 80 PVC or Brass coupling connection. (By Installer).

Hydraulic Requirements: 11 GPM at 3 PSI (42 LPM at 0.21 BAR)

Dimensions: L / W / H: 2'-1" / 1'-3" / 4'-0" (64 / 38 / 122 CM)

Note: Refer to "Installation Detail" for additional installation procedure.



Ranch Hand Pump

FunForms™ Aqua Sprayers

Fountain People, Inc. ~ PO Box 807 ~ 4600 Highway 123 ~ San Marcos, Texas 78667-0807
Phone (512) 392-1155 ~ Fax (512) 392-1154 ~ www.waterodyssey.com