

FunForms™ Aqua Slides

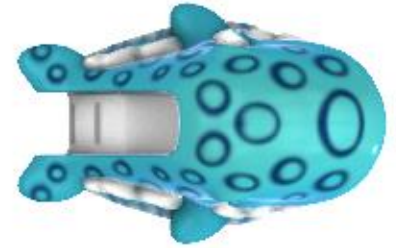
THEMED CREATIONS WITH COOL SPRAY EFFECTS



WATER ODYSSEY™

BY FOUNTAIN PEOPLE

A PLAYCORE Company



Billy Blue Whale

Note: Final product may vary from rendering.

Activity

This Aqua Slide is designed for ages 2-5 with a straight chute that exits down the front of the whale's mouth.

Mode: F1118



8 GPM at 3 PSI (30 LPM at 0.21 BAR)
36 GPM at 5 PSI (136 LPM at 0.34 BAR)



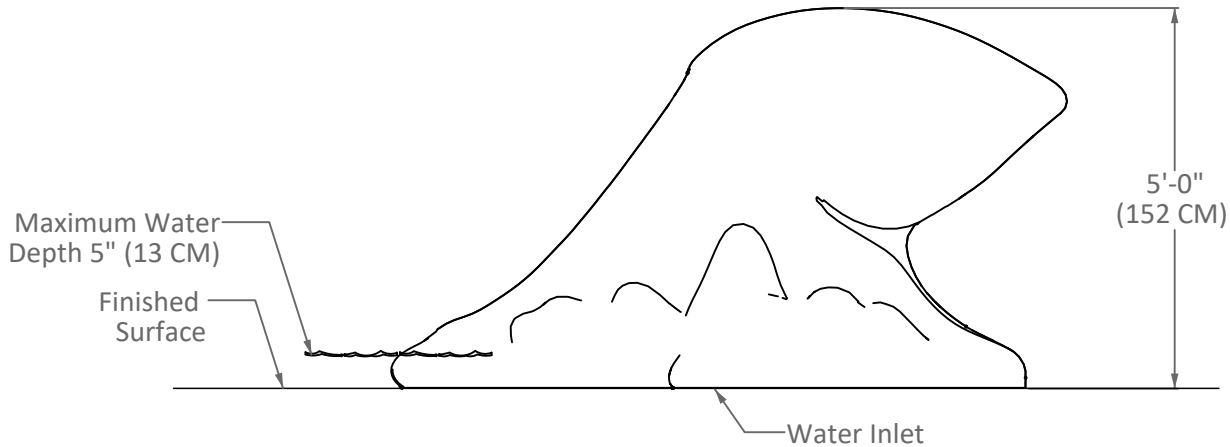
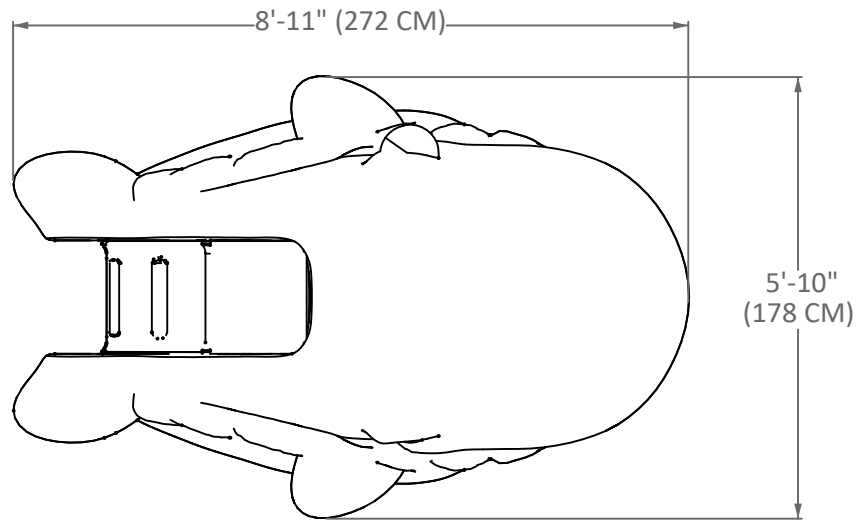
8'-11" / 5'-10" / 5'-0"
(272 / 178 / 152 CM)

Features & Benefits

- Can enhance your facility's theme.
- Coated with Aqua Armor - the most durable Chlorine UV and vandal resistant coating in the industry.
- Interchangeable with other Fun Forms™ spray features.
- ASTM compliant.

CREATING COMPELLING AQUATIC PLAY EXPERIENCES

512.392.1155 | www.waterodyssey.com



Specifications

Model Number: F1118

Age Group: Designated for ages 2 - 5

Construction: Hard foam core with Aqua Armor™ (structural elastomeric polymer outer shell)

Anchors: 1/2"-13 stainless steel epoxy anchors (Supplied)

Fasteners: 1/2"-13 Tamper-resistant stainless steel (Supplied)

Spacers: As required, must be non-ferrous (By Installer)

Supply Line: 1" NPT Sch 80 PVC or Brass coupling connection. (By Installer).

Hydraulic Requirements: 8 GPM at 3 PSI (30 LPM at 0.21 BAR)

Dimensions: L / W / H: 8'-11" / 5'-10" / 5'-0" (272 / 178 / 152 CM)

Additional Water Effects

- ☐ **F1118-E Slide with Additional Effects Water**
Increase supply line size to 1-1/2"
36 GPM at 5 PSI (136 LPM at 0.34 BAR)
- ☐ Located on splash pad or dry deck
- ☐ Located in water

Note: Refer to "Installation Detail" for additional installation procedure.



Billy Blue Whale

FunForms™ Aqua Slides

Fountain People, Inc. ~ PO Box 807 ~ 4600 Highway 123 ~ San Marcos, Texas 78667-0807
Phone (512) 392-1155 ~ Fax (512) 392-1154 ~ www.waterodyssey.com